

# Romanticism Military

## GERMAN ARMY UNIFORMS and INSIGNIA

**COMMISSIONED OFFICERS**

**COLLAR PATCHES**

- General Officers
- Colonel Staff Officers (Colonel General)
- Other Officers (Colonel General)
- Colonel (Staff Officer)

**HEADGEAR**

Color of piping indicates arm or service

Officers Uniform Cap Insignia

Field Cap Infantry

Field Cap Tank Troops

Assault Cap

**NATIONAL EMBLEMS**

Worn on right side of tunic

Worn on left side of tunic

**ADDITIONAL RANK INSIGNIA**

Worn on upper left sleeve of tunic and some garments by parades, rank straps, and instead of shoulder straps

**SHOULDER STRAPS**

Rank shown by braid and device

Branch Color on Piping

Regiment or Battalion Number on Strap

Company Number on Button

(See Numbers when with CIIC or DSI)

**MOBILE TROOPS**

Shoulder Straps: Subaltern, Master Sergeant (Regiment)

Shoulder Straps: Hauptmann, Master Sergeant (Regiment)

Shoulder Straps: Charlebois, Senior Officer Candidate

Shoulder Straps: Charlebois, Master Sergeant (Battalion)

Shoulder Straps: Infantry, First Sergeant or Field Sergeant

Shoulder Straps: Lieutenant

Shoulder Straps: Lieutenant

Shoulder Straps: Lieutenant

*Miss Frauen*

**Karl Lagerfeld**

1935 - 2019

He was one of the industry's truly iconic designers, at the helm of Chanel and Fendi that he helped revitalise, as well as his eponymous brand.

*Miss Frauen*



BOF RETAIL LUXURY

For more updates about the The BoF 500



**Line of Beauty**

**Biography**

Karl Lagerfeld was one of the fashion industry's most decorated designers, having helmed Chanel since 1983. He designed Chanel's ready-to-wear and couture lines, his own label, and collaborated with Silvia Fendi to create Fendi's ready-to-wear collections. Celebrated for his renaissance-

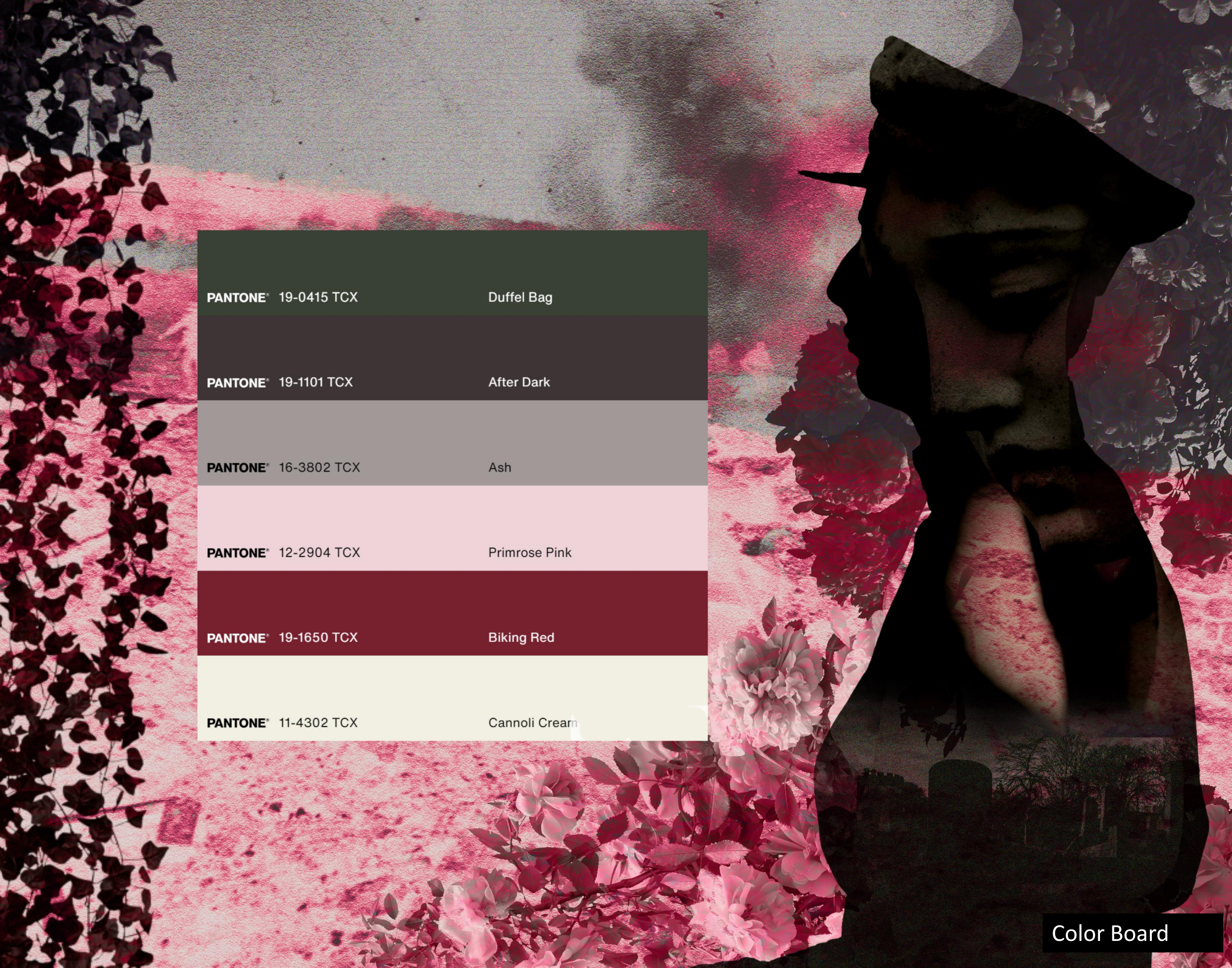
**Recent Mentions**

**Research Board**

She, like Courbet before, finds the figure  
"rather spectral. I mean, in Victorian psychic  
photographs, ghosts, etc, and there's  
something insubstantial, ghost-like about her.  
And of course, in all religions, whiteness is the  
"colour of death".



Theme Board



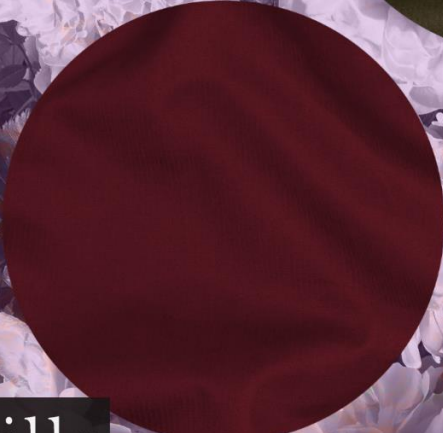
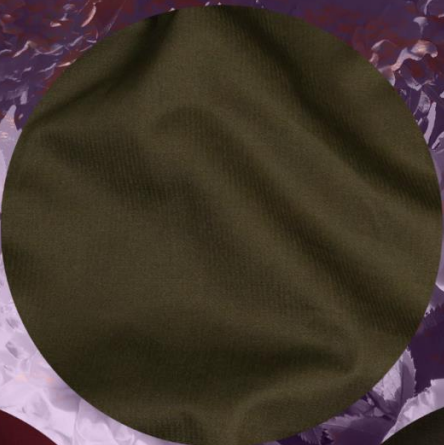
<b>PANTONE®</b> 19-0415 TCX	Duffel Bag
<b>PANTONE®</b> 19-1101 TCX	After Dark
<b>PANTONE®</b> 16-3802 TCX	Ash
<b>PANTONE®</b> 12-2904 TCX	Primrose Pink
<b>PANTONE®</b> 19-1650 TCX	Biking Red
<b>PANTONE®</b> 11-4302 TCX	Cannoli Cream



Ombre Silks



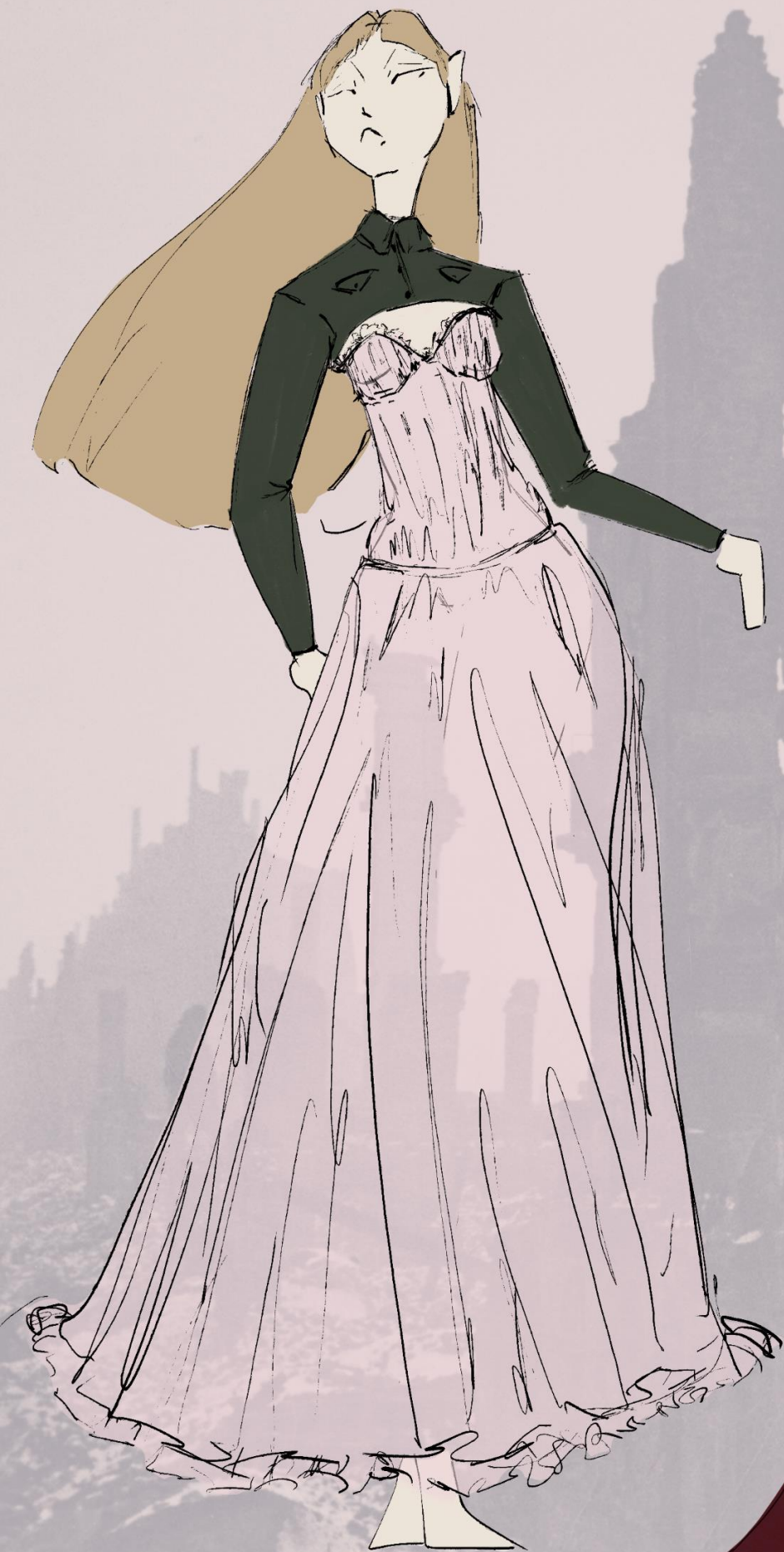
Crepe de Chine

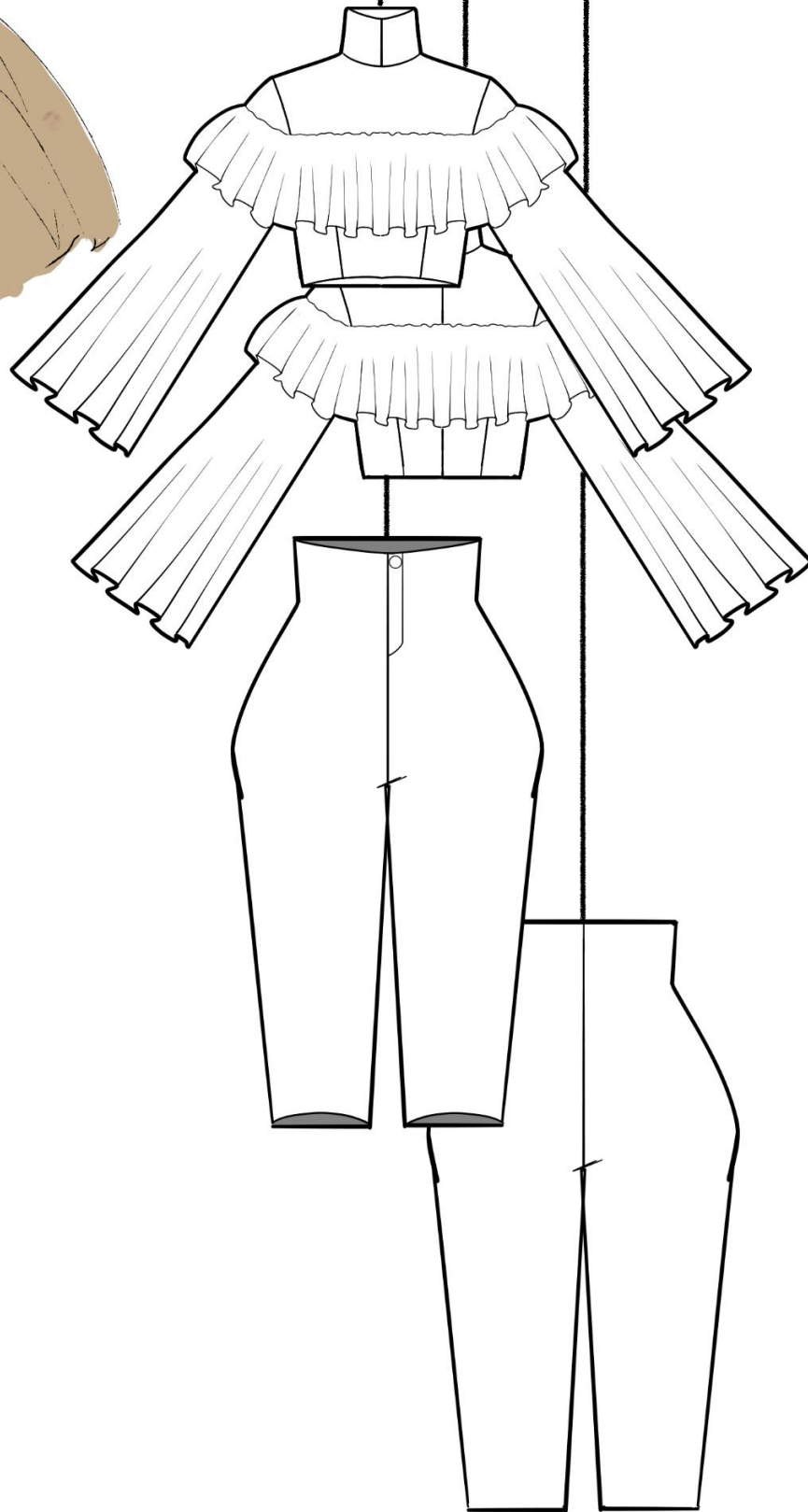


Cotton Broken Twills

Fabric Board





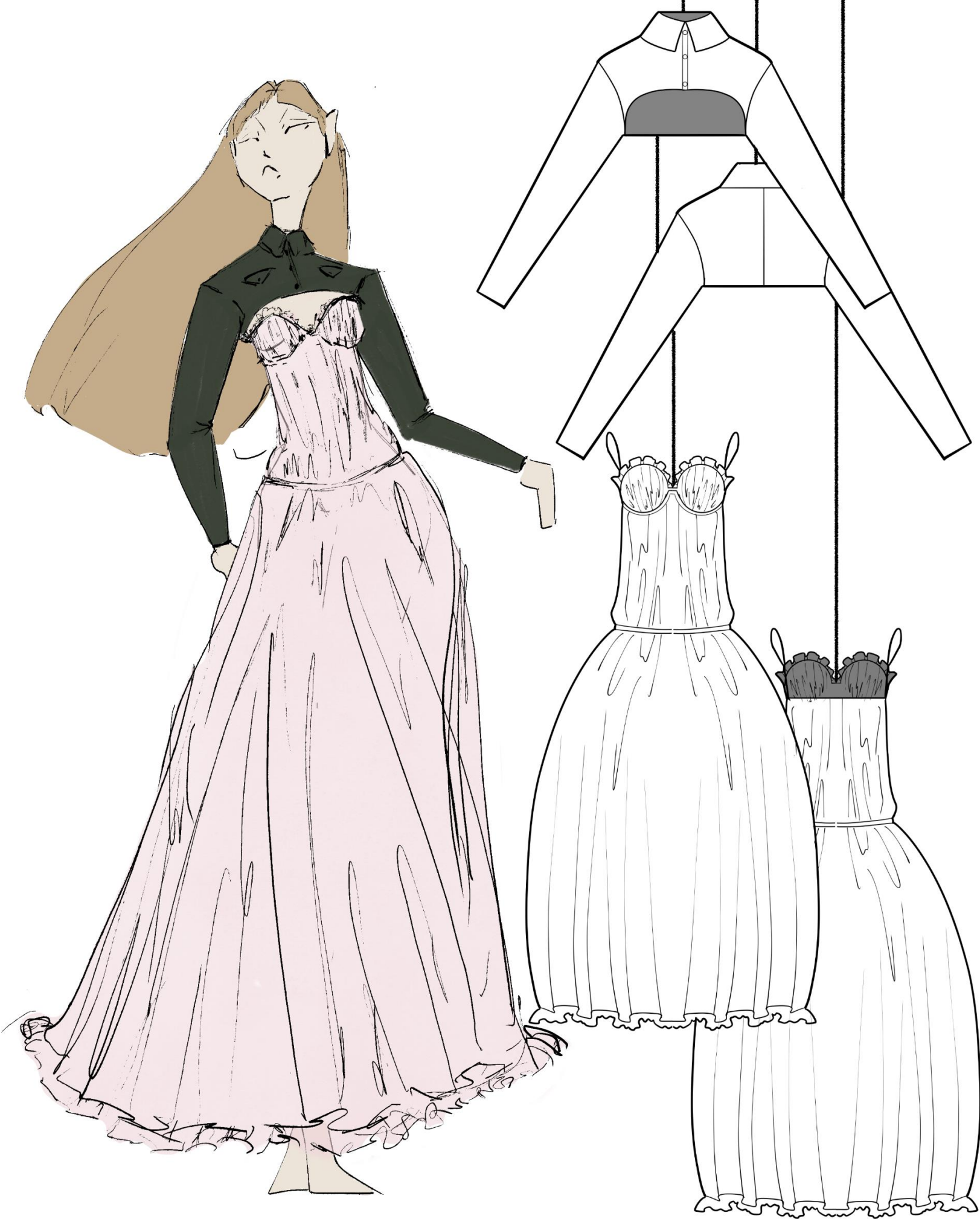


Flats  
Look 1





Flats  
Look 2



Flats  
Look 3